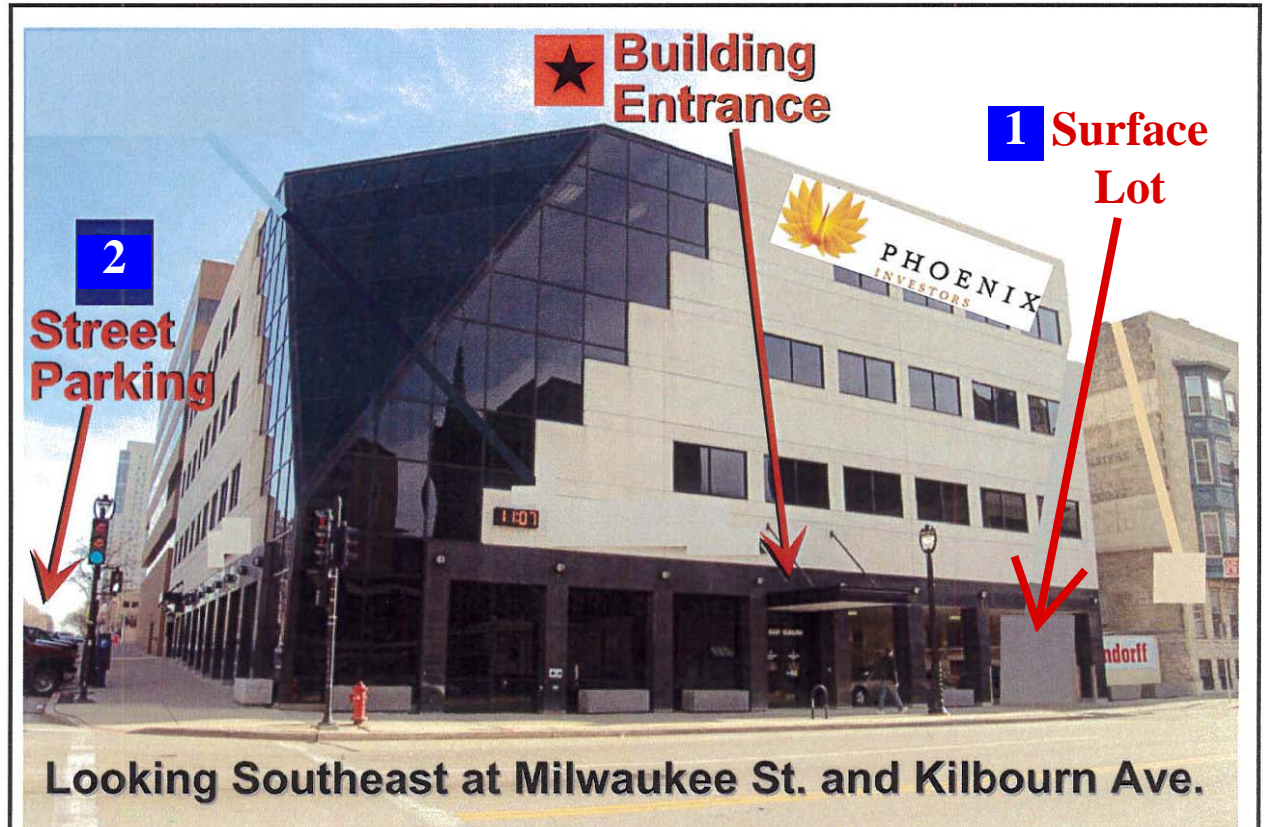
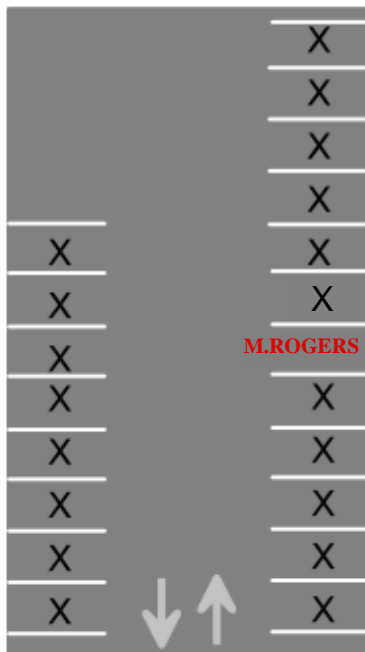


Surface Parking:

Please park on the right side in **M. ROGERS** space.



Looking Southeast at Milwaukee St. and Kilbourn Ave.

We are located on the fourth floor of the Phoenix Investors building at 401 E. Kilbourn Avenue, which is at the southeast corner of the intersection of E. Kilbourn Ave. and N. Milwaukee St.

PARKING:

- 1** You may park in our building's surface lot. Please park on the right side in the **M. ROGERS** space.
- 2** If our available space is taken, please use metered street parking on Kilbourn Ave. or Milwaukee St. Meter fees can be reimbursed by our office.

**ANGERMEIER
& ROGERS, LLP**

401 E. Kilbourn Ave. Suite 400
Milwaukee, WI 53202
(414) 289-9200

www.WiEstatePlanners.com

